

HANAZONO RUGBY STADIUM

Stadium Guide

Hanazono Rugby Stadium known, deservedly, as “the spiritual home of every Japanese rugby player”.

The stadium has evolved during the 90 years since opening in 1929. After major renovations the historic stadium reopened in 2018 with state-of-the-art facilities. Hanazono Rugby Stadium is one of the Rugby World Cup 2019™ venues and the starting point for a new era of Japanese rugby.

A visit to Hanazono Rugby Stadium is a special treat that includes the Rugby Museum (with its close-up experience of Japanese rugby history), the spectator-friendly stadium itself (with giant screen and floodlighting), and the well-kept turf that players really appreciate.

Everything dedicated to rugby - for everyone who loves rugby

Hanazono Rugby Stadium, the “spiritual home of every Japanese rugby player” continues to evolve as part of this community.

HANAZONO RUGBY STADIUM

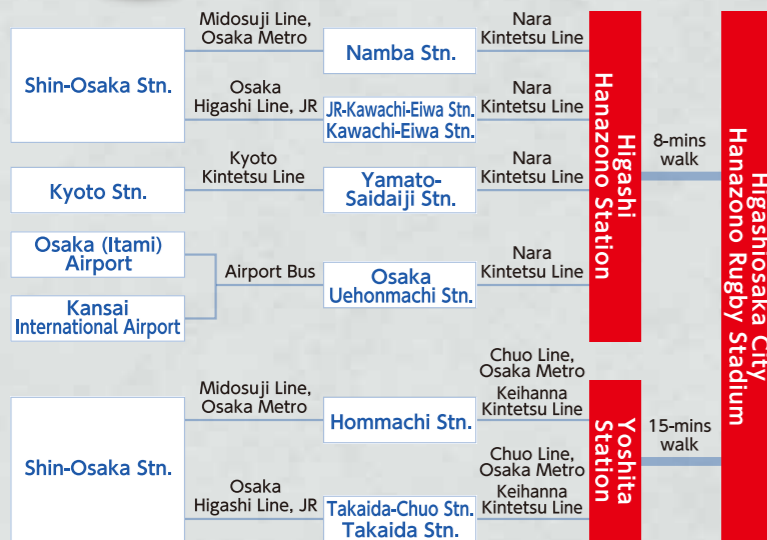
Scrum Screen

The south side exterior of the stadium features the ‘Scrum Screen’ (inspired by a rugby scrum). Latticework frames in the shape of 3 diamonds - standing for ‘unity’, ‘enthusiasm’, and ‘emotion’ - form a rhombus shape.

Easy access by train and by air

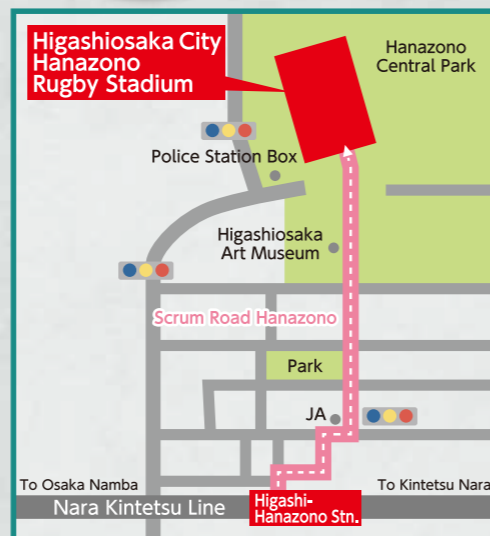
An 8-minute walk of rising anticipation for rugby!

Hanazono Central Park (and its various facilities)



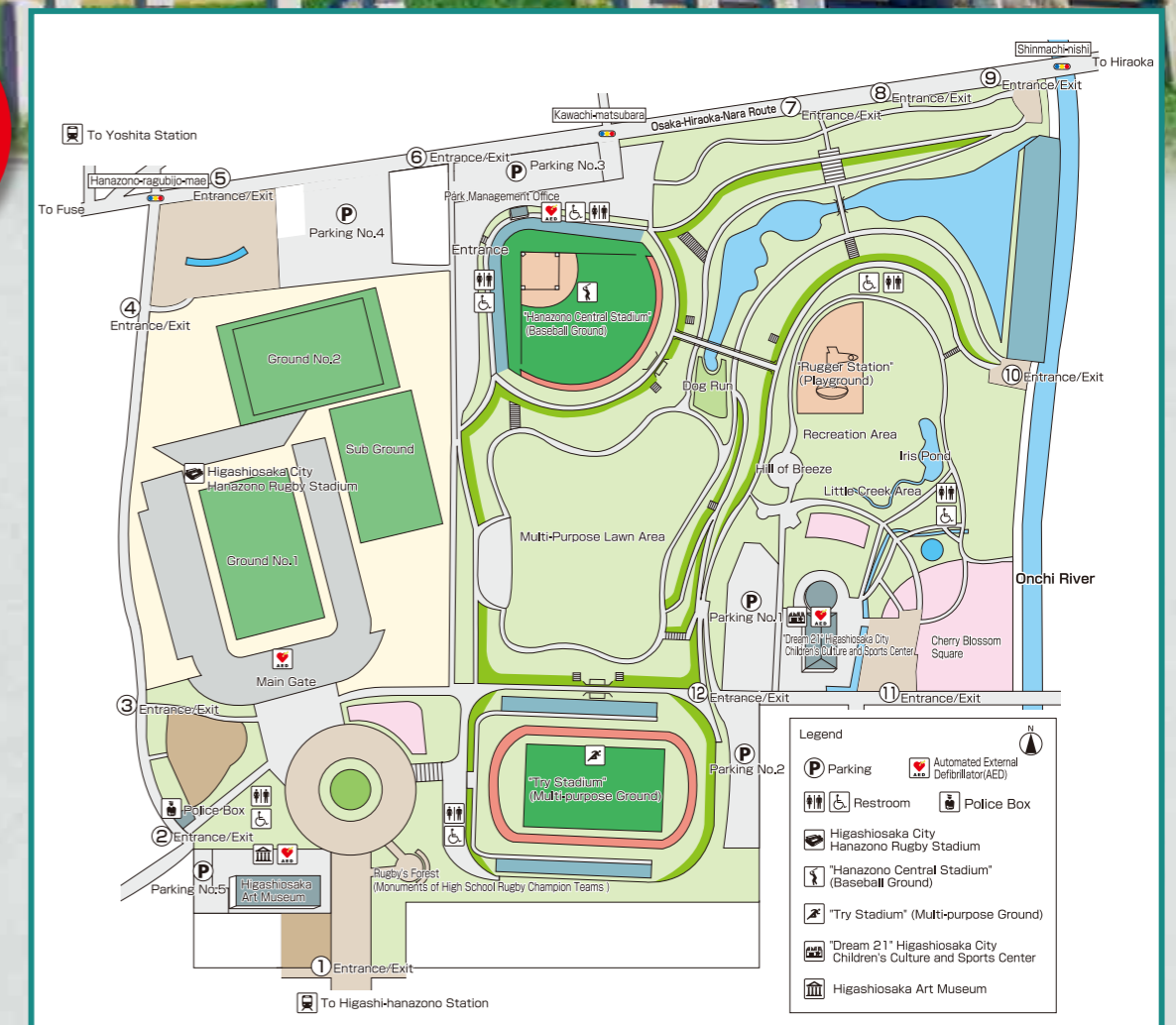
Approx. 1 hour from major cities!!

Timings above include the 8-minute walk from Higashi-Hanazono Stn. (not incl. transfer times at stations on the way) Train and bus times may differ, depending on their timetables.



An 8-minute walk north from Higashi-Hanazono Stn. (nearest station), with a street of rugby-related stores – aka, ‘Scrum Road Hanazono’ - leading to the stadium itself builds excitement towards the rugby to come.

Alternative option: a 15-mins. walk from **Yoshita Stn.** (Keihanna Kintetsu Line).





**RUGBY
WORLD CUP™**
JAPAN日本2019

Matches at
Hanazono Rugby Stadium



Italy v Namibia

Kickoff 14:15, Sunday 22 September



Argentina v Tonga

Kickoff 13:45, Saturday 28 September



Georgia v Fiji

Kickoff 14:15, Thursday 3 October



USA v Tonga

Kickoff 14:45, Sunday 13 October



History of Hanazono Rugby Stadium

1929



Sponsored by
Kintetsu Group Holdings Co., Ltd.

The stadium, its pitch covered entirely by Japanese lawn turf and a main stand topped by steel roofing, opened as a rugby-dedicated stadium capable of seating an impressive 12,000 spectators - the largest capacity in Asia at the time.

1943

As the Second World War intensified, the metal roof had to be given up as ordered by the Recovery of Metal Act. Towards the end of the war the stadium itself was used as farmland for more growing more food.



Sponsored by
Kintetsu Group Holdings Co., Ltd.

1945

The stadium was taken over by the General Headquarters of the Allied Powers on October 4.

1949

After derequisition on June 3, the facilities were upgraded year on year, especially in the replacement and growing of the turf.

1963



Since this time, and currently, the stadium has been hosting the excitement and action of the annual National High School Rugby Tournament.

1992

The renovation was completed in October, with steel roofing re-installed. Japan's first "Historical Collections of Rugby Hall" was opened inside the stadium.



Sponsored by
Kintetsu Group Holdings Co., Ltd.

2015

On March 2, 2015, the stadium was selected as a venue for Rugby World Cup 2019™, JAPAN. Renamed as "Higashiosaka Hanazono Rugby Stadium" from April 1st.

2017

Large-scaled renovations carried out for Rugby World Cup 2019™, JAPAN.

2018

2019

Rugby World Cup 2019™, JAPAN



RWC 2019 Official mascots 「Ren-G」

2020

The 100th National High School Rugby Tournament

2021

World Masters Games 2021 Kansai



2029

The 100th Anniversary of Hanazono Rugby Stadium

New ways to enjoy watching a match (with new equipment)



H-A-N-A-Z-O-N-O letters visible in the East Stand

Seating



Comfortable individual seats with backrests. Seats with built-in cup holders in the West Stand. Try to find your favorite numbers like "R-20-29".



Before renovation. Some old seats are still in use today. Can you find them?

17m-high Rugby Posts



17m high rugby posts newly installed to meet international standards and giving better visibility for goal kicks.



The previous 13m high posts were transferred to Kamitonda Sports Center in Wakayama Prefecture.

Illuminations



The stadium is exciting to see not only in the daytime but also at night with illuminations built into the lattice-shaped south side wall.

Giant Screen/ North Stand



The new 710-inch screen installed on the new North Stand. Video replays and other audio /screen enhancements add so much more to the match-viewing experience.



Before renovation there was a golf practice range under the electronic scoreboard but no stands.

Wheelchair Rows



Extra wheelchair rows, and new elevators, installed near the Main Gate allow easy access for wheelchair users.



Floodlighting
Full-LED floodlighting make night-time matches possible

Remodeled rooms



Locker Room 2019 (A,B,C&D)



The stadium has everything to help players achieve peak performance-top quality lockers and an ice bath, etc.



Before renovation. (These wood lockers are still used in the Referee Room).

Rugby World Cup 2019™ room



Room closest to the Stadium Ground No.1 with direct view of natural turf - the best spot for watching games and other events.

Control Room



High-tech console, controlling the giant screen, in-field cameras and sound. Bringing added dynamism to matches.

VIP Room / VIP Lounge (Corporate hospitality area)



Premium space with kitchens on top floor overlooking the ground with Ikoma mountains behind.

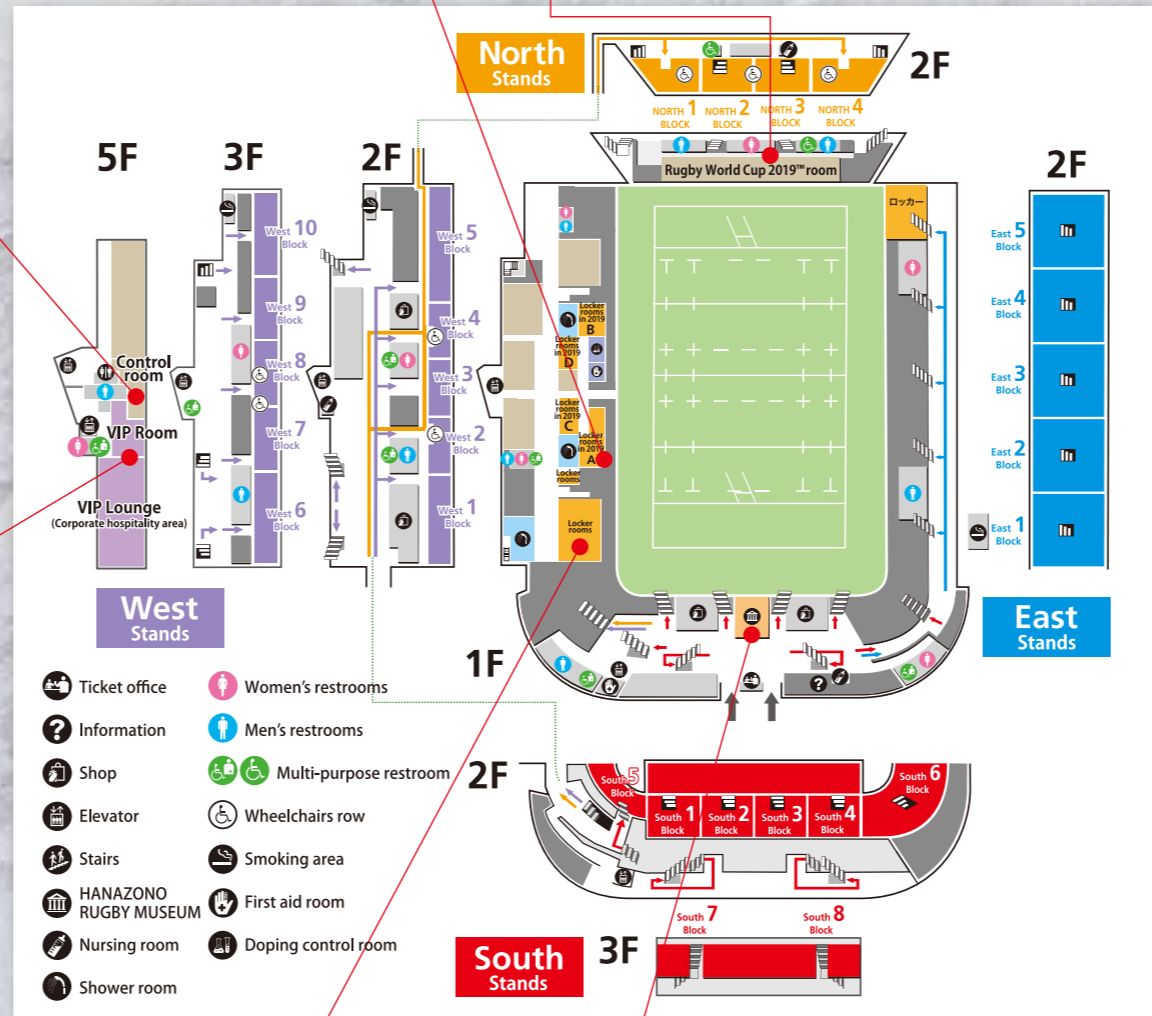
Locker Room



16 lockers in total (10 on West Stand and 6 on East Stand) for National High School Rugby Tournaments and other matches.



Old hooks, re-used as a way to remind future generations of the stadium history.



Ground No.2



Sub Ground

Hanazono Rugby Museum



Exhibition of precious rugby memorabilia. Visitors can enjoy cutting-edge, novelty technologies such as VR and "Flash Print" trick photography, etc. See next page for details.

Hanazono Rugby Museum



Hanazono Rugby Museum

Experience rugby's thrills and excitement at this experimental museum, reopened as a depository that collects together rugby's history for everybody to share and enjoy.

Rugby History (permanent exhibition)



Exhibition about rugby's origins, including Japanese and world rugby, and the history of Hanazono Rugby Stadium

Major Stories Exhibition



An exhibition highlighting results from historical matches with Japan's National team, the story of the rugby ball travelling into space, etc.

Finals Highlights from National Tournaments



Enjoy highlights from the finals of the National High School Rugby Tournaments as well as an exhibit of team uniforms worn by current champions and runners-up.

Rugby in VR / Rugby scenes on video



Don't miss this rugby game in dynamic image and sound!

Flash Print (novelty photographic effects)



After National High School Rugby Tournament highlights, you see a rugby ball hit a wall, which then crumbles. Take a flash photo at that moment and see a hidden meaning appear in the resulting picture!

Rugby Archives



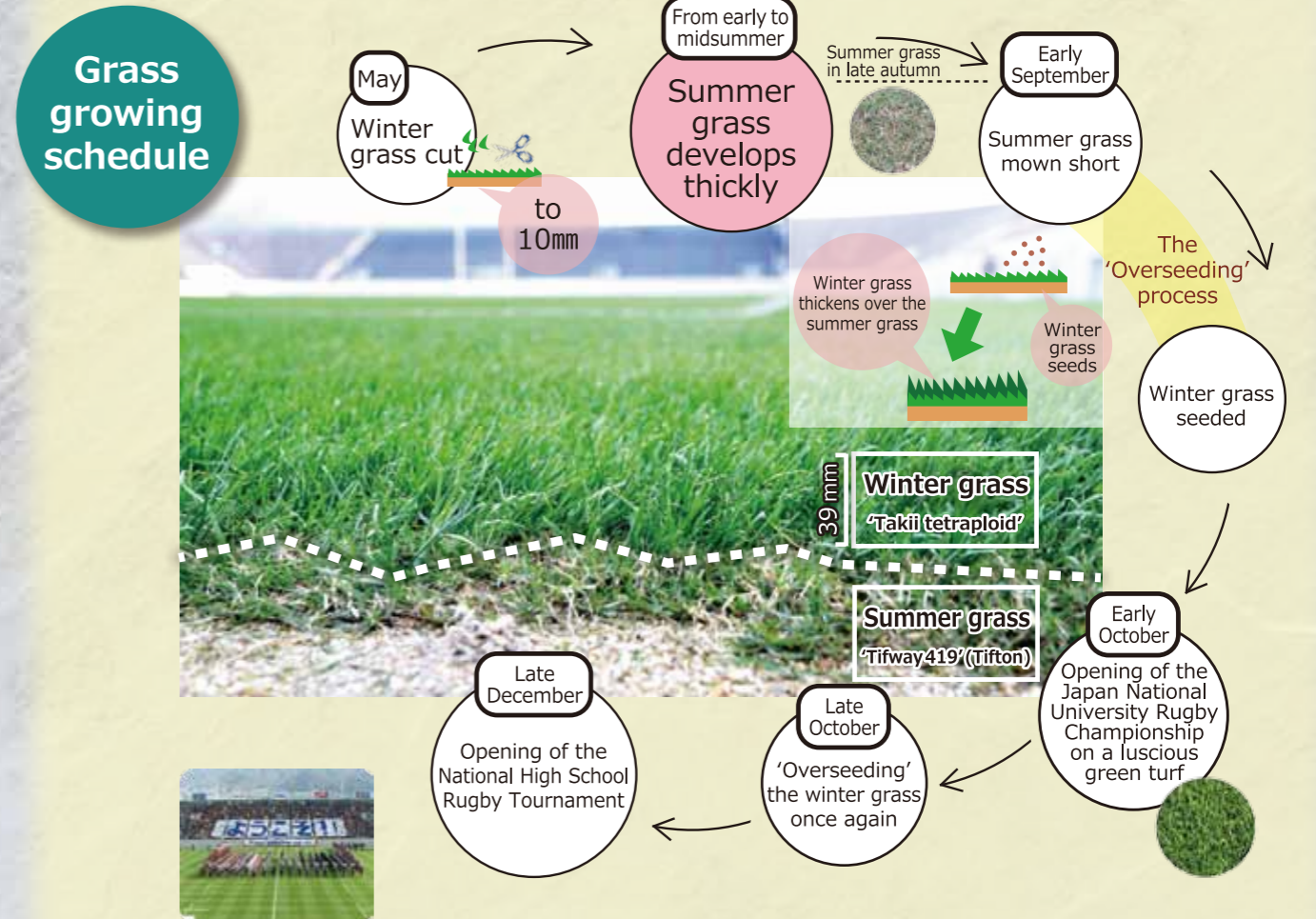
Stories from the past in this newspaper archives collection

Secrets behind Hanazono Rugby Stadium's luscious green turf

About the turf at Hanazono Rugby Stadium

Grass length	39mm (longer than football, 39mm is optimal for rugby)
Summer grass variety	'Tifway 419' (Tifton). This grass takes root during summer and is the key to turf strength at Hanazono Stadium
Winter grass variety	'Takii tetraploid'. These seeds were finally selected as being the best for Hanazono Stadium.
Seeding density of winter grass	96g/m ² achieved by minute calculations

The turf on the pitch of Hanazono Rugby Stadium stays lush green even in winter. Japan's native grass, known as 'summer grass' tends to wither in winter. To match the winter timing of rugby's high season, a so-called 'overseeding' process is used. This involves cutting summer grass short to stop it growing and then planting European winter grass seeds.



Time allowed for turf curing

At Hanazono Rugby Stadium a fixed turf curing period lets the grass grow without any stress so that the roots grow thick and strong for resisting the trampling of the most powerful scrum.

Trial and error / Sharing expertise

The overseeding turf grow method was adopted because of its proven effectiveness in other stadiums. A native Japanese grass species had been used in the past but after trying out various different seed types for Hanazono, the more suitable 'Tifway 419' (Tifton) and 'Takii tetraploid' varieties were adopted. Sharing knowhow with other stadiums and repeated trial and error has resulted in an excellent turf.



Hanazono Rugby Stadium

1-1-1 Matsubara-minami, Higashiosaka City 578-0923
Tel: +81-72-961-3668, Fax: +81-72-961-3661
<http://hanazono-rugby-hos.com/>